



PROJECT PROFILE

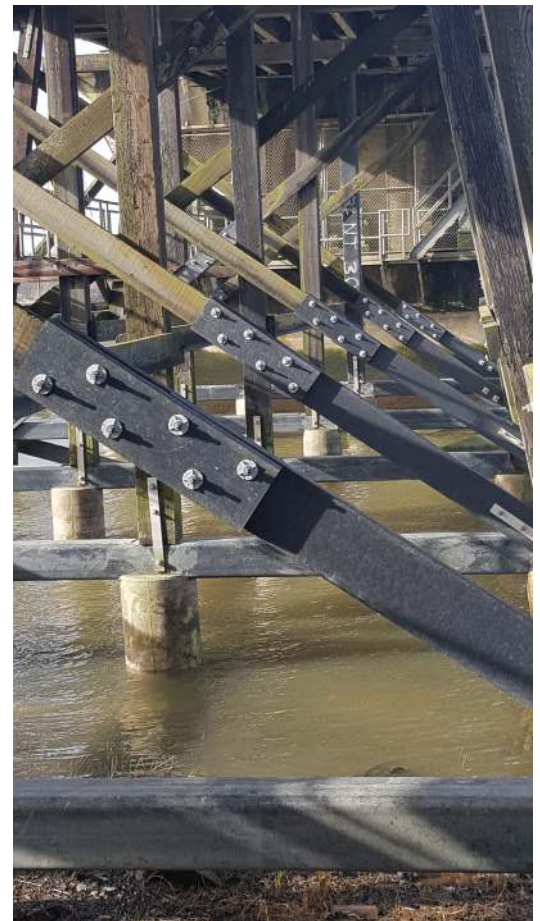


Lewis and Clark River Bridge & Old Youngs Bay Bridge - Outside of Astoria, Oregon

Contractor: Oregon State Bridge Construction, Inc.

When the Oregon Department of Transportation needed to repair 2 of the oldest bridges on the historic 101 Highway System they turned to the HDPE Timber's manufactured by Bedford Technologies. See (<http://schraderco.com/bedford-technology/>). The existing wood timbers that support both bridges had rot and decay issues and needed to be replaced.

Bedford Technologies engineers developed a splice system that allowed FiberForce® 4 x 12's to be used at 29' and 33' lengths and also supplied 12 x 12 SeaTimber® reinforced by (4) 1- 5/8" Rebars @ 34' Lengths. The repairs are in place and the ODOT engineers were extremely happy with the end results and the work done by Oregon State Bridge Construction, INC of Stayton, OR.



For information on this project or the many other products that Schrader Company Sales represents, visit

www.schraderco.com

Schrader Co. presents *environmentally-conscious products* for the industrial marine market and other applications for a variety of uses including piers, wharves, marinas, bridges, boardwalks and seawalls.